

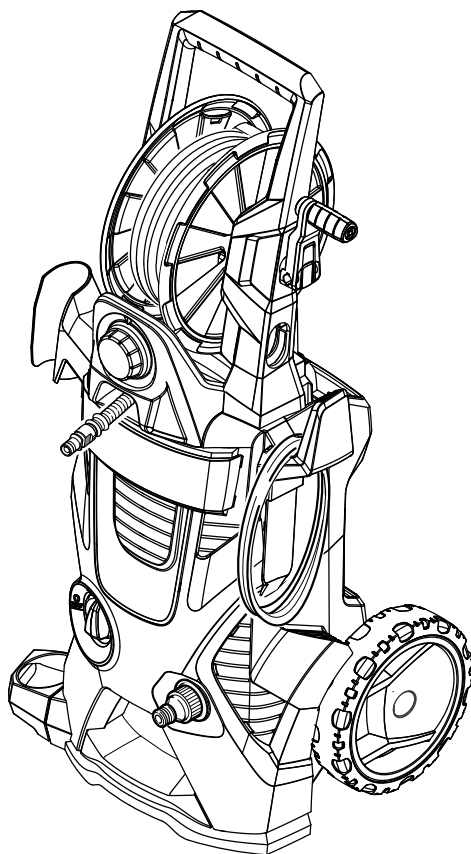
KÄRCHER

makes a difference

K 4 Premium

English..... 2

繁體中文 16



59677210 (02/17)

Contents

Safety instructions	2
Proper use	5
Environmental protection	5
Description of the Appliance	6
Assembly	7
Start up	8
Operation	9
Transport	10
Storage	11
Care and maintenance	11
Troubleshooting	12
Accessories and Spare Parts	13
Warranty	13
Technical specifications	13
Illustration	15

Safety instructions



Please read and comply with these original instructions prior to the initial operation of your appliance and store them for later use or subsequent owners.

Apart from the notes contained herein the general safety provisions and rules for the prevention of accidents of the legislator must be observed.

Warnings and notes that are attached on the appliance provide important notes for the safe operation.

Hazard levels

△ DANGER

Pointer to immediate danger, which leads to severe injuries or death.

△ WARNING

Pointer to a possibly dangerous situation, which can lead to severe injuries or death.

△ CAUTION

Pointer to a possibly dangerous situation, which can lead to minor injuries.

ATTENTION

Pointer to a possibly dangerous situation, which can lead to property damage.

Electric components

△ DANGER

Risk of electric shock.

- *Never touch the mains plug and the socket with wet hands.*
- *Check the power cord with mains plug for damage prior to every use. Immediately have damaged power cord replaced by an authorised customer service / electrician. Do not operate an appliance if the power cord is damaged.*
- *All current-conducting parts in the working area must be protected against jet water.*
- *The mains plug and the coupling of an extension cable must be watertight and must never lie in water. Moreover, the coupling may never lie on the ground. The use of cable reels that ensure that the sockets are at least 60 mm above the ground is recommended.*

- *Make sure that the power cord or extension cable is not damaged by running over, pinching, dragging or the like. Protect the power cords from heat, oil, and sharp edges.*
- *Turn off the appliance and remove the mains plug prior to any care and maintenance works.*
- *Repair work and work on the electrical components may only be performed by an authorised customer service.*

⚠ WARNING

- *The appliance may only be connected to an electric supply that has been installed by an electrician in accordance with IEC 60364.*
- *The appliance may only be connected to alternating current. The voltage must correspond with the type plate of the appliance.*
- *For safety reasons, we recommend that you operate the appliance only via a residual current device (max. 30 mA).*
- *Safety class I - Appliances may only be connected to sockets with proper earthing.*
- *An unsuitable electrical extension cable can be hazardous. Only use an electrical extension cable which has been approved and labelled for this purpose and has an adequate cable cross-section outdoors: 1 - 10 m: 1.5 mm²; 10 - 30 m: 2.5 mm²*
- *Always fully unreel the extension cable from the cable drum.*

Safe handling

⚠ DANGER

- *The user must use the appliance as intended. The person must consider the local conditions and must pay attention to other persons in the vicinity when working with the appliance.*
- *Check important components, such as high-pressure hose, hand spray gun and safety installations, for damage prior to every operation. Immediately replace damaged components. Do not operate appliance with damaged components.*
- *High-pressure jets can be dangerous if improperly used. The jet may not be directed at persons, animals, live electrical equipment or at the appliance itself.*
- *The high-pressure jet must not be directed at other persons or the user himself/herself to clean clothing or footwear.*
- *Vehicle tyres/tyre valves are susceptible to damage from the high-pressure jet and may burst. The first indication for this is a discolouration of the tyre. Damaged vehicle tyres/tyre valves are perilous. Keep a minimum jet distance of 30 cm during cleaning!*

⚠ WARNING

- *Do not use the appliance when there are other persons around unless they are also wearing protective clothing.*
- *The appliance must not be operated by children or persons who have not been instructed accordingly.*
- *This appliance is not intended for use by persons with limited physical, sensory or mental capacities or lacking experience and/or skills, unless such persons are accompanied and supervised by a person in charge of their safety or they have received precise instructions on the use of this appliance and have understood the resulting risks.*
- *Children must not play with this appliance.*
- *Supervise children to prevent them from playing with the appliance.*

△ CAUTION

- Create stability for the appliance prior to any work on or with the appliance to prevent accidents or damage.
- The water jet that is emitted from the high-pressure nozzle results in a repulsion power acting on the hand spray gun. Make sure that you have a firm footing and are also holding the hand spray gun and spray lance firmly.
- Never leave the appliance unattended as long as it is in operation.

ATTENTION

- In case of extended breaks, switch off the appliance at the appliance switch.
- Do not operate the appliance at temperatures below 0 °C.

Other risks

△ DANGER

- The appliance may not be operated in explosive atmospheres.
- Never use the appliance to clean objects containing hazardous substances (e.g. asbestos).
- Do not spray flammable liquids.
- Never draw in fluids containing solvents or undiluted acids and solvents! This includes petrol, paint thinner and heating oil. The spray mist is highly inflammable, explosive and poisonous. Do not use acetone, undiluted acids and solvents, as they corrode the materials used on the appliance.
- Keep packaging films away from children, there is a risk of suffocation!

△ WARNING

- According to applicable regulations, the appliance must never be used on the drinking water net without a system separator. Ensure that the connection of your building water installation on which the high-pressure cleaner is operated is equipped with a system separator pursuant to EN 12729 Type BA.
- Water that has flown through a system separator is no longer classified as drinking water.

- High-pressure hoses, fixtures and couplings are important for the safety of the appliance. Only use high-pressure hoses, fixtures and couplings recommended by the manufacturer.
- When disconnecting the supply or high pressure hose, hot water may leak from the connections after operation.

△ CAUTION

- Mind the weight of the appliance when selecting the storage location and during transport (see technical data) to prevent accidents or injuries.

Personal protective equipment

△ CAUTION

- Wear protective clothing and safety goggles to protect against splash back containing water or dirt.
- During the use of high-pressure cleaners aerosols can develop. Inhaling aerosols can cause health damage.
 - Depending on the application, completely shielded nozzles (e.g. surface cleaner) that significantly reduce the emission of aqueous aerosols can be used for high-pressure cleaning.
 - The use of such shielding is not possible with all applications.
 - If the use of a completely shielded nozzle is not possible, a respirator of the category FFP 2 or the like should be used, depending on the environment to be cleaned.

Symbols on the machine



The high pressure jet must not be directed at persons, animals, live electrical equipment or at the appliance itself.

Protect the appliance against frost.



The appliance must not be directly connected to the public drinking water network.

Safety Devices

⚠ **CAUTION**

- *Safety installations serve the protection of the user and may not be modified or bypassed.*

Appliance switch

The appliance switch prevents unintentional operation of the appliance.

Lock trigger gun

This lock locks the lever of the trigger gun and prevents the inadvertent start of the appliance.

Overflow valve with pressure switch

The overflow valve prevents the permissible working pressure from being exceeded. If the lever on the trigger gun is released the pressure switch turns off the pump, the high pressure jet is stopped. If the lever is pulled the pump is turned on again.

Motor protection switch

The motor protection switch switches off the device if the power consumption is high.

Proper use

This high pressure cleaner is designed for domestic use only.

- for cleaning machines, vehicles, buildings, tools, facades, terraces, gardening tools, etc. by means of a high-pressure water jet (if necessary, with additional cleaning agents).
- with accessories, replacement parts and cleaning agents approved by KÄRCHER. Please observe the information accompanying the cleaning agents.

Environmental protection

Notes about the ingredients (REACH)

You will find current information about the ingredients at:

www.kaercher.com/REACH



The packaging material can be recycled. Please arrange for the environmentally appropriate disposal of the packaging.



Old appliances contain valuable recyclable materials that should be recycled properly. Please arrange for the environmentally appropriate disposal of the old devices.

Electrical and electronic devices often contain components which could potentially pose a danger to human health and the environment if handled or disposed of incorrectly. However, these components are necessary for the proper operation of the device. Devices marked with this symbol must not be disposed of with regular household rubbish.



Cleaning operations which produce oily waste water, e.g. engine washes, underbody washes, may only be carried out using washing stations equipped with an oil separator.

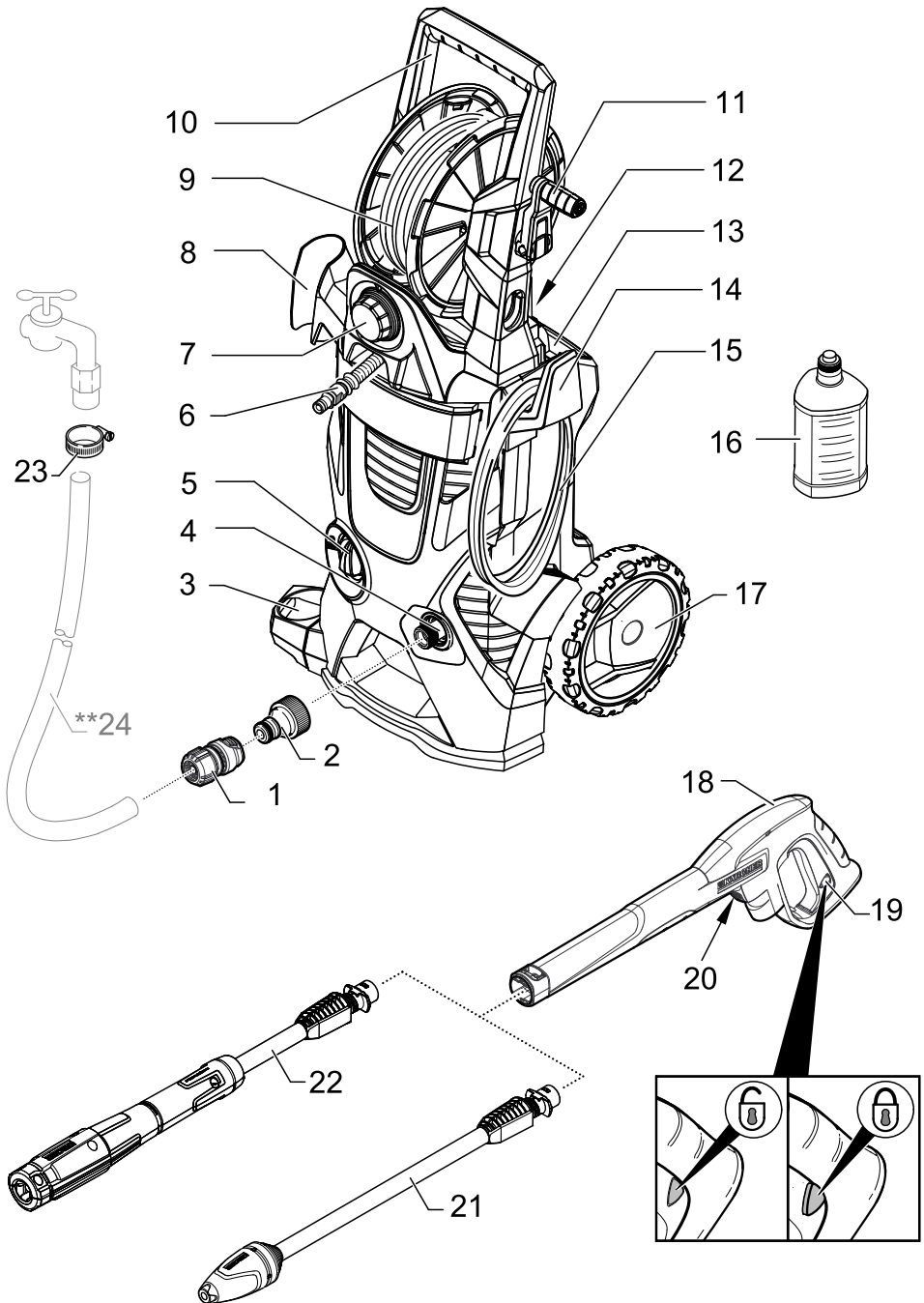


Work with detergents must only be performed on liquid-tight work surfaces with a connection to the sewer system. Do not let release detergent into waters or earth.



The extraction of water from public waters is prohibited in some countries.

Description of the Appliance



Description of the Appliance

The scope of delivery of your appliance is illustrated on the packaging. Check the contents of the appliance for completeness when unpacking.

In the event of missing accessories or any transport damage, please contact your dealer.

- 1 Hose coupling
- 2 Coupling element for water connection
- 3 Storage for trigger gun
- 4 Water connection with integrated sieve
- 5 Appliance switch „0/OFF“ / „I/ON“
- 6 High pressure hose
- 7 Dosage regulator for detergent
- 8 Storage for trigger gun
- 9 High-pressure hose drum
- 10 Transport handle
- 11 Hand crank for hose drum
- 12 Storage of Plug 'n' Clean detergent bottle with detergent connection
- 13 Storage for accessories
- 14 Storage hook for mains connection cable
- 15 Mains cable with mains plug
- 16 Plug 'n' Clean detergent bottle with locking lid
- 17 Wheels
- 18 Trigger gun
- 19 Lock trigger gun
- 20 Key to detach the high pressure hose from the trigger gun
- 21 Spray lance with Dirtblaster
For strong contaminations
- 22 Spray lance with pressure regulation (Vario Power)
Carrying out the most common cleaning tasks. The work pressure can be stagelessly regulated between "Min" and "Max". You can add detergent when "Mix" is selected.
In order to adjust the working pressure, release the lever of the trigger gun and turn the spray lance to the desired position.
- 23 Hose clip

** Additionally required

- 24 Use a fabric reinforced water hose.
 - Minimum diameter, 1/2 inches (13 mm).
 - Minimum length 7.5 m.

Assembly

Mount loose parts delivered with appliance prior to start-up.

Illustrations on Page 14

Install wheels

Illustration **A**

- Push the wheels into the intake.
- Secure the wheels using the included plug. Align the plug properly!

Install the storage for trigger gun

Illustration **B**

- Place the bottom holder into the recesses and push forward until it audibly locks in.
- Insert the top holder and push down all the way.

Install the storage hook for the mains connection cable

Illustration **C**

- Press in the storage hook and lock it into the top position.

Install the transport handle

Illustration **D**

You will need the 2 included screws as well as a Phillips screwdriver PH 2.

- Slide the transport handle into the guide and secure it with 2 screws.

Install the dosage regulator for detergent

Illustration **E**

You will need the 2 included screws as well as a Phillips screwdriver PH 2.

- Insert both detergent hoses onto the hose fittings.
- Install the dosage regulator and connect using 2 screws.

Note: During installation you must make sure that the tongues of the dosage regulator match up with the intended recesses in the casing.

Install the high pressure hose drum

Illustration

- Slide the free end of the coiled high pressure hose through the recesses on the dosage regulator.
- Insert the hose drum into the intakes on the transport handle.
- Insert the axle of the hand crank into the guides.
- Install the fixating plate and secure it using 2 screws.
- Press the connecting fitting from the short high pressure hose into the brass intake, secure with clamps.

Note: Make sure the connection nipple is aligned correctly.

Connect the high pressure hose to the trigger gun

Illustration

- Push the high pressure hose into the trigger gun until it locks audibly.

Note: Make sure the connection nipple is aligned correctly.

- Check the secure connection by pulling on the high pressure hose.

Installing coupling

Illustration

- Screw the coupling element to the water connection on the appliance.

Start up

- Park the appliance on an even surface.
- Insert the mains plug into the socket.

Water supply

For connection values, see type plate/technical data.

ATTENTION

Impurities in the water can damage the high-pressure pump and the accessories. For protection, the use of the KÄRCHER water filter (optional accessory, order no. 4.730-059) is recommended.

Water supply from mains

Observe regulations of water supplier.

ATTENTION

Hose couplings made of metal with aquastop can damage the pump! Please use plastic couplings or KÄRCHER brass couplings.

Illustration

- Screw the supplied hose coupling on to the end of your water supply hose.
- Attach the water supply hose to the coupling on the water connection.
- Connect the water supply hose to the water supply.
- Completely open the water tap.

Drawing in water from open reservoirs

This high-pressure cleaner is suited to work with the KÄRCHER suction hose with back-flow valve (Optional accessory, order no. 4.440-238) to draw in surface water, e.g. from water butts or ponds (see specifications for max. suction height).

- Remove coupling from the water connection.
- Fill the suction hose with water.
- Screw the suction hose into the water connection of the appliance and insert it into the water source (e.g. rainwater drum).

Remove air from appliance before operation.

- Turn on the appliance "I/ON".
- Unlock the lever on the trigger gun.
- Pull on the lever of the trigger gun; the device will switch on.
- Let the appliance work until the water exits at the hand spray gun without bubbles (max. 2 minutes).
- Release the lever on the trigger gun.
Note: Release the lever of the trigger gun; the device will switch off again. High pressure remains in the system.
- Lock the lever on the trigger gun.

Operation

ATTENTION

Dry running of more than 2 minutes leads to damage of the high-pressure pump. If the appliance does not build up pressure within 2 minutes, switch the appliance off and proceed in accordance with the instructions in Chapter "Troubleshooting".

High pressure operation

⚠ CAUTION

Keep a distance of at least 30 cm when using the jet for cleaning painted surfaces to avoid damage.

ATTENTION

Car tyres, paint or sensitive surfaces such as wood should not be cleaned with the dirt blaster, as there is a risk of damage.

Illustration 

- Push the spray lance into the trigger gun and fasten it by turning it through 90°.

Illustration 

- Unwind the high pressure hose completely from the hose drum. Hold on to the transport handle during this procedure.

Note: If the hand crank is in its secured position, fold it up first.

- Turn on the appliance "I/ON".
- Unlock the lever on the trigger gun.
- Pull on the lever of the trigger gun; the device will switch on.

Note: Release the lever of the trigger gun; the device will switch off again. High pressure remains in the system.

Operation with detergent

⚠ DANGER

When using detergents, the material data safety sheet issued by the detergent manufacturer must be adhered to, especially the instructions regarding personal protective equipment.

Most KÄRCHER detergents can be bought ready to use in a Plug 'n' Clean detergent bottle.

Note: Detergent can only be added when the device is operated in low pressure mode.

- Use spray lance with pressure regulation (Vario Power).
- Turn the spray lance to "Mix" position.
Note: This will mix the detergent with the water stream.

Illustration 

- Remove the lid from the Plug 'n' Clean detergent bottle and press the detergent bottle into the detergent connection with the opening facing down.

Illustration 

- Adjust the suction volume of the detergent solution by means of the dosage regulator for detergents.
 - Medium quantity: Central position
 - Large quantity: "+" position
 - Small quantity: "-" position

Recommended cleaning method

- Spray the detergent sparingly on the dry surface and allow it to react, but not to dry.
- Spray off loosened dirt with the high pressure jet.

After operation with detergent

- Remove the Plug 'n' Clean detergent bottle from the intake and close it with the lid.
- For storage, put the detergent bottle into the retainer with the cap pointing up.

Interrupting operation

- Release the lever on the trigger gun.
- Lock the lever on the trigger gun.
- Insert the trigger gun in its holder.
- During longer breaks (more than 5 minutes), also turn the appliance off using the "0/OFF" switch.

Finish operation

⚠ **CAUTION**

Only separate the high-pressure hose from the trigger gun or the appliance when there is no pressure in the system.

- After operation with detergent: Run the machine for approximately 1 minute for a clear rinse.
- Release the lever on the trigger gun.
- Turn off the appliance "0/OFF".
- Disconnect the mains plug from the socket.
- Turn off tap.
- Press the lever on the trigger gun to release any remaining pressure in the system.
- Lock the lever on the trigger gun.
- Detach the appliance from the water supply.

Transport

⚠ **CAUTION**

*Risk of personal injury or damage!
Mind the weight of the appliance during transport.*

When transporting by hand

- Pull the appliance by its transport handle.

When transporting in vehicles

- Prior to horizontal transport: Remove the Plug 'n' Clean detergent bottle from the intake and close it with the lid.
- Secure the appliance against shifting and tipping over.

Storage

⚠ CAUTION

*Risk of personal injury or damage!
Consider the weight of the appliance when storing it.*

Storing the Appliance

- ➔ Park the machine on an even surface.
- ➔ Press the disconnect on the trigger gun and remove the high pressure hose from the trigger gun.
- ➔ Detach spray lance from the trigger gun.
- ➔ Engage the spray lance in its compartment.
- ➔ Insert the trigger gun in its holder.
- ➔ Stow the power cord and the remaining accessories on the appliance.

Illustration

- ➔ Wind the entire high pressure hose onto the hose drum by rotating the hand crank counter-clockwise.

Prior to extended storage periods, as during the winter, also observe the instructions in the Care section.

Frost protection

ATTENTION

Appliances and accessories that are not completely drained can be destroyed by frost. Completely drain appliance and accessories and protect them against frost.

To avoid damage:

- ➔ Detach the appliance from the water supply.
- ➔ Detach spray lance from the trigger gun.
- ➔ Turn on the appliance "I/ON".
- ➔ Push the lever of the trigger gun until no more water is escaping (approx. 1 min).
- ➔ Release the lever of the trigger gun.
- ➔ Lock the lever of the trigger gun.
- ➔ Turn off the appliance "0/OFF".
- ➔ Store the appliance and the entire accessories in a frost free room.

Care and maintenance

⚠ DANGER

Risk of electric shock.

- *Prior to all work on the appliance, switch off the appliance and pull the power plug.*

Clean the sieve in the water connection

Clean the sieve in the water connection regularly.

ATTENTION

The sieve must not be damaged.

- ➔ Remove coupling from the water connection.

Illustration

- ➔ Pull the sieve out using flat pliers.
- ➔ Clean the sieve under running water.
- ➔ Reinsert the sieve into the water connection.

Troubleshooting

You can rectify minor faults yourself with the help of the following overview.

If in doubt, please consult the authorized customer service.

⚠ **DANGER**

Risk of electric shock.

- *Prior to all work on the appliance, switch off the appliance and pull the power plug.*

Appliance is not running

- Pull on the lever of the trigger gun; the device will switch on.
 - Check whether the voltage indicated on the type plate corresponds to the voltage of the mains supply.
 - Check the mains connection cable for damages.
 - Motor overloaded, the motor circuit breaker has tripped.
 - Turn off the appliance "0/OFF".
 - Allow the device to cool down for **one hour**.
 - Switch on the device and put it into operation again.
- If the malfunction occurs repeatedly, have the device checked by the customer service.

Appliance does not start, motor hums

Voltage reduction due to weak mains supply or when using an extension cable.

- When switching on, first pull the lever of the trigger gun and then switch the appliance switch to "I/ON".

Pressure does not build up in the appliance

- Check setting at the spray lance.
- Check water supply for adequate delivery rate.
- Pull out the sieve in the water connection using flat-nose pliers and clean under running water.
- Appliance ventilation: Switch the appliance on with the high-pressure hose detached and operate (max. 2 minutes) until the water exits the high-pressure connection without bubbles. Switch off appliance and reconnect high-pressure hose.

Strong pressure fluctuations

- Clean high-pressure nozzle: Remove dirt and debris from the nozzle bore, using a needle and rinse through with water from the front.
- Check water flow quantity.

Appliance is leaking

- Slight leakage from the appliance pump is normal. If the leakage increases contact the authorized customer service.

No detergent infeed

- Use spray lance with pressure regulation (Vario Power). Turn the spray lance to "Mix" position.
- Check the settings at the dosage regulator for detergent.
- Check whether the Plug 'n' Clean detergent bottle is placed into the detergent connection facing down.
- Check the detergent suction hose for kinks.

Accessories and Spare Parts

Only use original accessories and spare parts, they ensure the safe and trouble-free operation of the device.

For information about accessories and spare parts, please visit www.kaercher.com.

Warranty

The warranty terms published by the relevant sales company are applicable in each country. We will repair potential failures of your appliance within the warranty period free of charge, provided that such failure is caused by faulty material or defects in manufacturing. In the event of a warranty claim please contact your dealer or the nearest authorized Customer Service centre. Please submit the proof of purchase. Addresses can be found under:

www.kaercher.com/dealersearch

Technical specifications

Electrical connection

Voltage	110 V 1~ 60 Hz
---------	-------------------

Connected load	1,6 kW
----------------	--------

Protection class	IP X5
------------------	-------

Protective class	I
------------------	---

Water connection

Max. feed pressure	1,2 MPa
--------------------	---------

Max. feed temperature	40 °C
-----------------------	-------

Min. feed volume	10 l/min
------------------	----------

Max. Suction height	0,5 m
---------------------	-------

Performance data

Working pressure	9 MPa
------------------	-------

Max. permissible pressure	13 MPa
---------------------------	--------

Water flow rate	5,0 l/min
-----------------	-----------

Max. flow rate	5,8 l/min
----------------	-----------

Detergent flow rate	0-0,3 l/min
---------------------	-------------

Recoil force of trigger gun	11 N
-----------------------------	------

Dimensions and weights

Length	332 mm
--------	--------

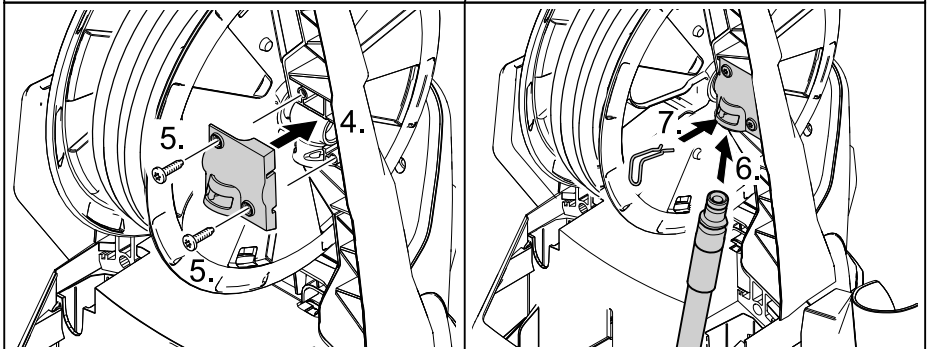
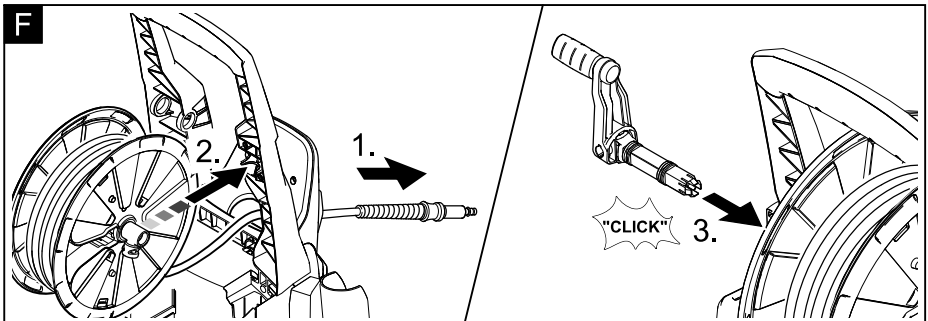
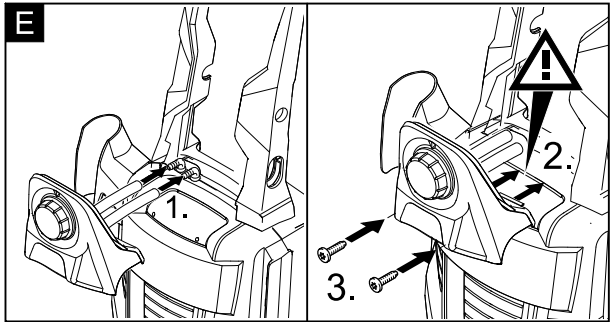
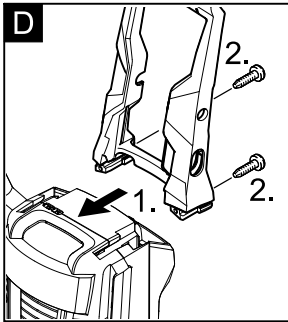
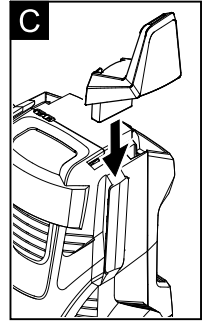
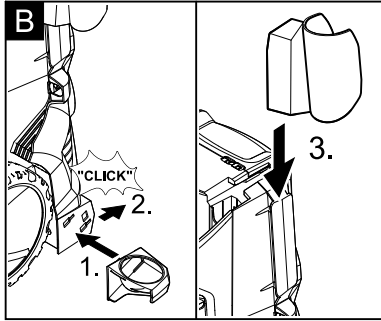
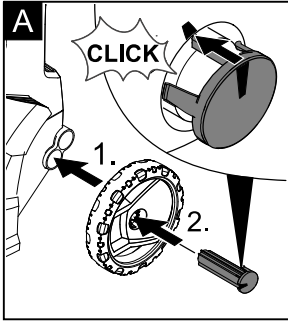
Width	426 mm
-------	--------

Height	872 mm
--------	--------

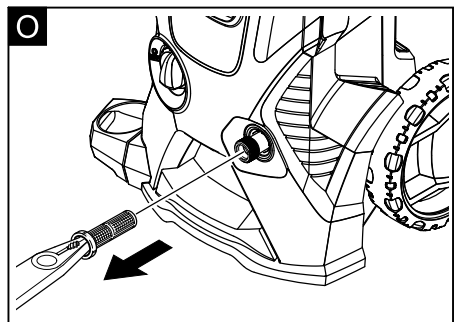
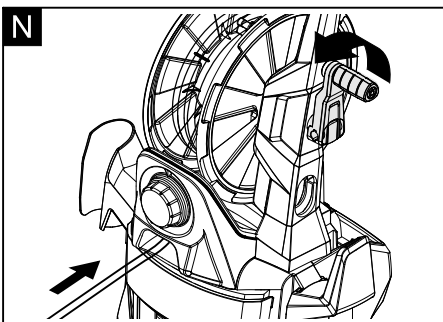
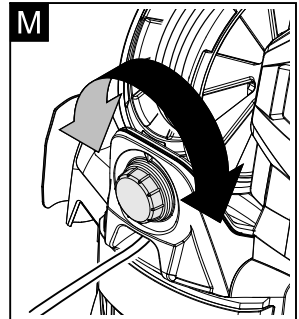
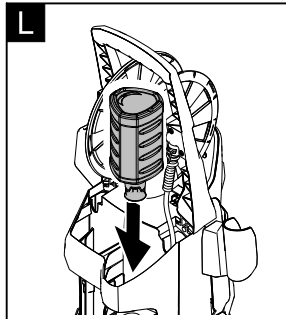
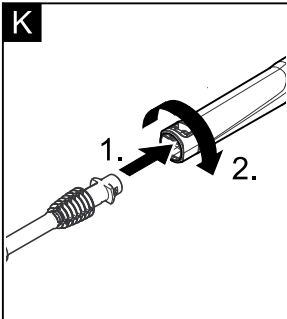
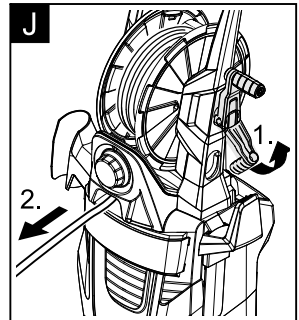
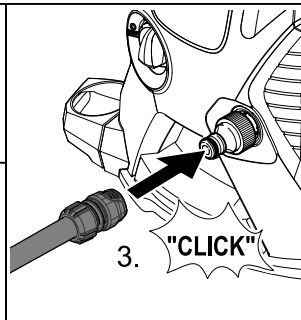
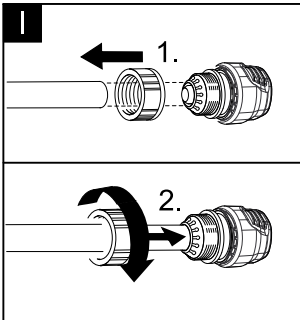
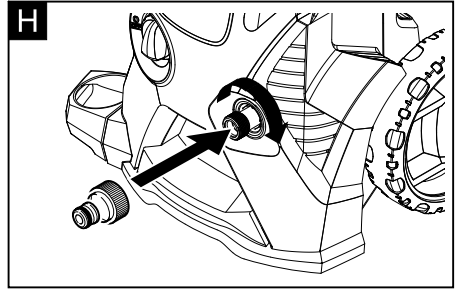
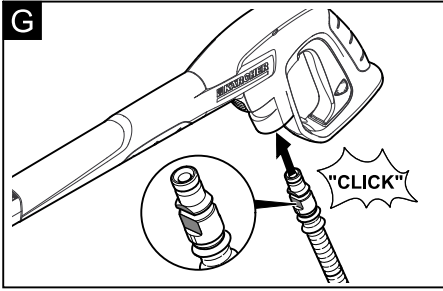
Weight, ready to operate with accessories	15,3 kg
---	---------

Subject to technical changes.

Illustration



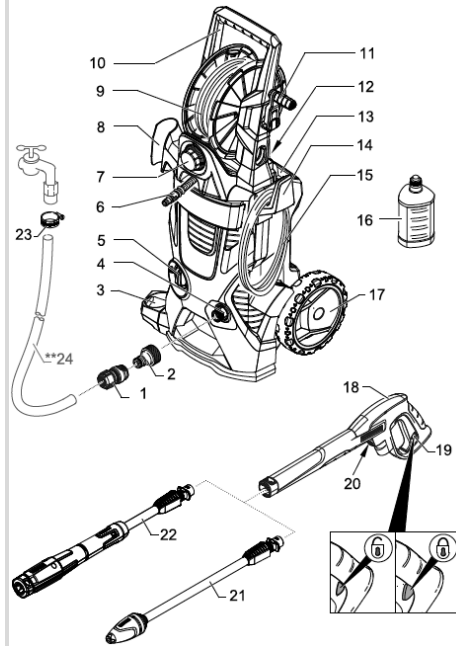
Illustration



德國凱馳

德國凱馳家用高壓清洗機 K 4 Premium 中文說明書

(一) 主機本體與配件名稱



1. 水管快速接頭
2. 進水接頭
3. 高壓槍把座
4. 進水口(含過濾網)
5. 電源開關
6. 高壓管
7. 調整清潔劑量控制裝置
8. 高壓槍托
9. 高壓管捲盤組
10. 把手
11. 高壓管捲盤組把手
12. 便利清潔劑插槽
13. 配件收納盒
14. 電源線收納勾
15. 電源線/電源線插頭

16. 清潔劑桶
17. 大型滾輪
18. 高壓噴槍
19. 槍把安全開關
20. 高壓管拆除按鍵
21. 螺旋噴桿
22. 高低壓可調式噴桿
23. 管束
24. 自購水管(4分水管)

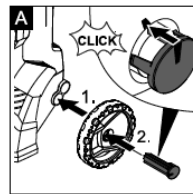
(二) 安全提示

使用本產品前，請遵守下列基本安全事項

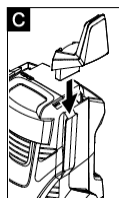
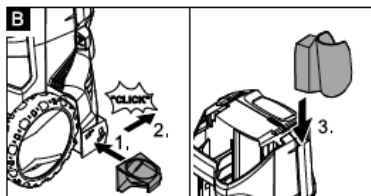
- 第一次使用前，請務必詳閱本說書。
- 請了解主機安裝、操作高壓與關閉主機方式。
- 請勿於身體不適時操作主機，以免發生危險。
- 請遵守本說明之配件使用、保養與維修資訊。

(三) 使用前

步驟 A、安裝主機滾輪



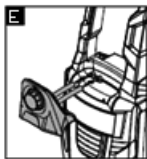
步驟 B/C、安裝高壓槍座、槍托與
電源線收納勾



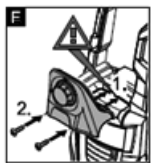
步驟 D、將主機手提把安裝於主
機上



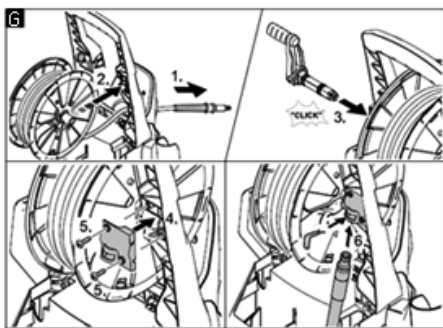
步驟 E、安裝調整清潔劑量控制
裝置



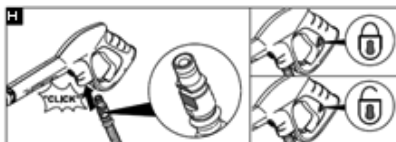
步驟 F、使用十字螺絲起子將清劑
量調整裝置用內附兩顆固定螺絲
鎖緊



步驟 G、將高壓管捲線盤組一端
穿主機把手下方空隙(如動作 1 所
示)，固定於手把中間後(如動作 2
所示)，將高壓管捲盤組把手由主
機把手左側洞口插入聽到「喀」
(如動作 3 所示)的聲音後，表示捲
線盤組左側已經固定。再將右側
捲線盤組高壓轉接器固定於把手
後固定位置(如動作 4 所示)，將內
附的塑膠檔板蓋上，並用十字螺
絲起子鎖緊(如動作 5 所示)。最後
將主機上的高壓管插入捲線盤組
的高壓轉接器內(如動作 6 所示)，
將內附的固定鐵環扣上(如動作 7
所示)即完成捲線盤安裝。



步驟 H、將高壓管插入噴槍內聽
到「喀」的聲音。安裝後輕拉高
壓管確認安裝妥當。



拆除高壓管與噴槍連接：按下高壓管拆除按鍵將高壓管移除。

(四) 操作說明

使用者必須正確操作主機。當主機運行時請注意環境是否安全並且提示在主機附近的人，特別是孩童。切勿在主機尚未停止運行或關閉時離開，以免發生危險。

▲ 危險

爆炸危險，不得噴射可燃液體於主機本體。

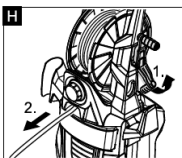
在危險區域(如：加油站)使用設備時應遵守相關安全規定。

▲ 危險

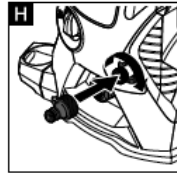
- 當準備啟動高壓操作前，請勿將高壓噴桿對著其他人，以免發生危險，開始使用或調整高壓時，噴桿應該隨時朝向地面。
- 不要朝向無法固定的物體使用，以免物體飛起傷害到其他人或動物。
- 長時間運行主機可能會造成手肘因為高壓震動所帶來的傷害，請注意以下說明：
- 長時間操作恐會有血液循環問題。
- 建議使用手套以保護手部的安全。
- 清潔操作時應該有適當的休息時間，不建議連續操作。



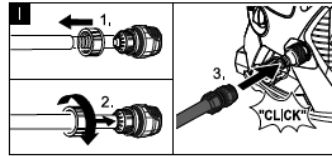
步驟 H、將高壓管從捲線盤組拉出



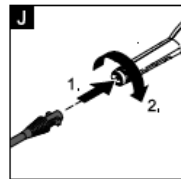
將進水接頭接在進水口上並鎖緊



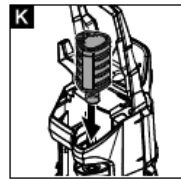
步驟 I、將水管一端的快速接頭接上進水接頭



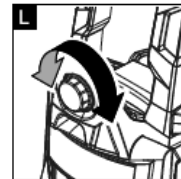
步驟 J、安裝槍桿於槍把上



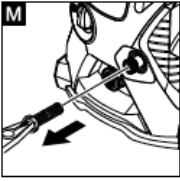
步驟 K、安裝清潔劑桶



步驟 L、可依清潔需要調整清潔劑量控制裝置

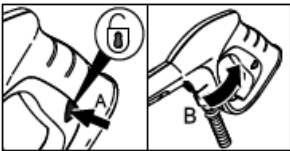


步驟 M、過濾網可以利用尖型夾子取出清潔

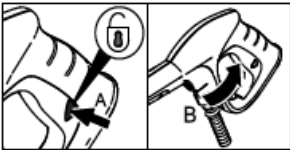


- 插上電源線。注意請勿使用一般延長線延伸高壓清洗機使用範圍，可能會造成電源供應不足而無法正常使用。如需延長線，建議使用 2.0m/m(2 平方)以上，限長度五米。另外請勿與其他電器共用插座，並確認電源為 110V/60Hz。

- 將噴槍安全開關關閉，將槍把朝下啓動，待高壓管內空氣排出後即可正常使用。



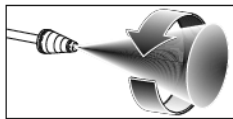
- 將主機開關調至“ON”。注意當按下槍把時主機高壓才會啓動，釋放時主機高壓會自動關閉。



(五) 使用配件

強力螺旋噴桿

該噴桿屬於 0 度錐形螺旋噴頭，會釋出 360 度高壓水柱並提升 50% 清潔能力。因此請勿使用該噴桿於軟性的清潔物體上。



高低壓可調噴桿

高低壓可調噴桿，可經由噴桿前端調整裝置 Max(最大/Min 最小) 因清潔物體不同時調整。如搭配清潔劑使用時，應使用本噴桿並調至為低壓。

(六) 使用清潔劑操作

注意

請使用德國凱馳專用指定的清潔劑，其他未認證的清潔劑很有可能對於主機造成影響或損壞。使用清潔劑時請參考該包裝上相關使用說明，請遵守各地區環保相關法規。選用適合的清潔劑問題，請洽德國凱馳授權經銷商或直營客戶服務/維修中心。

步驟一、請使用高低壓可調噴桿，並將噴桿壓力調整至最低。

步驟二、請將德國凱馳專用清潔劑依劑量指示添加後，將清潔劑桶插入便利清潔劑插槽中。

步驟三、將主機電源打開，壓下噴槍讓主機吸入清潔劑與高壓混合。請注意保持清潔劑剩餘量。

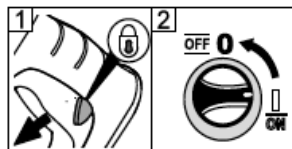
步驟四、將泡沫清除，請調整噴桿至低壓模式。

步驟五、使用完畢泡沫清潔後，建議將清潔劑吸管放置於清水中，將管線中殘留泡沫清潔處理。

(七) 中斷運行五分鐘以上

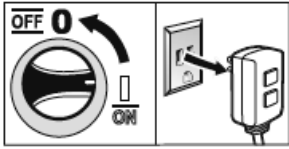
→ 鬆開噴槍開關，將噴槍安全開關鎖上。

→ 將主機開關關閉。

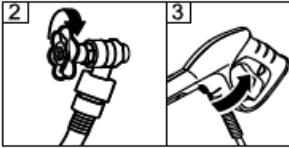


(八) 關閉主機

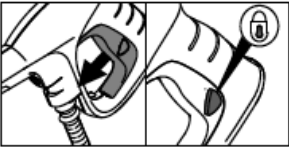
- 將主機總電源開關調到“0”。
- 將電源線從插座上拔除。



- 關閉供水裝置。
- 控制噴槍，將高壓釋放到沒有壓力。



- 將噴槍安全開關調至關閉，保證不會被任意啓動。



(九) 主機存放

- 把連接噴桿之噴槍固定於主機側固定座上。
- 電源線收納於電源線架上。
- 將高壓管捲好放到主機上。

(十) 主機收納

注意：請選擇適當的擺放位置及負載重量。

主機必須收納存放於室內。

(十一) 主機維護及保養

您可以和您的德國凱馳授權經銷商聯繫進行安全檢查或維修服務，或是直接聯繫德國凱馳維修服務中心。

(十二) 在每次運作前

- 請確認各配件連接口是否有損壞，如果有發現損壞情況請停止使用，並聯繫德國凱馳授權經銷商或是直接聯繫德國凱馳維修服務中心進行更換。
 - 檢查高壓管是否有損傷(爆裂危險)。
 - 檢查幫浦密封性。
- 每三分鐘 3 滴水是可以接受的正常範圍。如有更嚴重不密封請電維修中心。

(十三) 每周的保養

- 清洗進水接口的過濾網清潔。

(十四) 故障排除

馬達未啓動	主機開關可能未打開	請將主機開關調整至” I”
	電源線未插上	請將電源線插妥
	電源插座電源供應不足	更換不同電源插座或專用插座
	入水管徑太小	更換標準入水管
主機高壓無法釋出	水源被限制	請確認出水口是否有漏水或不正常安裝
	入水接口過濾裝置堵塞	請拆卸下後清潔
	噴桿調在低壓清潔	請將噴桿調整至最大壓力
	噴桿調在低壓清潔	請將噴桿調整至最大壓力
高壓水柱不正常釋出	水源供應不足	請確認供應出水來源是否有異常
	幫浦充滿空氣	檢查進水管與各接口是否緊密，關閉主機按下噴槍將空氣排出
	入水接口過濾裝置堵塞	拆下清潔
	噴嘴堵塞	請使用細針進行清潔
	高壓管有破損	請檢查並更換高壓管

無清潔劑泡沫	清潔劑吸管沒放置妥當	檢查清潔劑吸管
	泡沫太多	建議使用德國凱馳專用清潔劑
	清潔劑吸管堵塞	清潔吸管頭
	清潔劑吸管破損	請聯絡服務中心並進行更換
	噴桿高壓模式	請調整為低壓模式
	噴嘴堵塞	請使用細針清潔
噴桿漏水	噴桿未正確接妥	請檢查並接妥鎖上
	噴桿內的防水環損壞	請聯絡服務中心並進行更換
幫浦工作聲音過大	幫浦充滿空氣	檢查進水管與各接口是否緊密，關閉主機按下噴槍將空氣排出
主機幫浦漏水(10滴/每分鐘)	檢查是否安裝不正確	請依照說明書提示安裝
	水封裝置損壞	請聯絡服務中心並進行更換

(十五) 相關配件

全系列德國凱馳產品皆有專用相關的配件進行更換或維修，請勿任意拆解，此動作很有可能讓主機損壞且無法修復。相關配件購買，請洽德國凱馳原廠展售中心或授權經銷商。

(一) 汽車清潔組 2.643-033.0



(二) 多向旋轉刷頭 2.640-907.0



(三) 強力高壓刷頭 6.903-276.0



(四) 彎曲噴桿 2.638-817.0



(五) 繞式噴桿 4.760-272.0

(可調整旋轉 180 度針對各角度清潔物)



(六) 高壓延長桿 2.642-347.0(可延長 1.2~4 米)



(七) 快接式槍把高壓管組(高壓管 7.5 米) 2.641-828.0



(八) 強力地板清洗刷 T350 T- Racer 2.643-252.0



(九)

清潔劑名稱	料號	適用範圍
通用清潔劑	6.295-753.0	通用各範圍
木頭煙塵清潔劑	6.295-757.0	木頭與石頭
汽車泡沫水臘劑	6.295-750.0	汽車清洗

(十六) 產品保固

1. 德國凱馳建議本主機僅能使用於家用用途。主機若經原廠維修判斷為人為使用不當因素(如使用在商業營業用)，主機與其配件將失去原廠保固。
2. 主機僅能使用自然水，請勿使用含鹽水質。
3. 主機馬達與配件因原廠製造瑕疵將提供原廠零件維修。主機馬達提供一年保固，其餘配件及消耗品(高壓管等配件)，皆不在保固範圍內。

產品規格表：

電壓	110 V / 60Hz
功率	1.6 kW
壓力(Max.)	130 Bar
流量(公升/每小時)	300 l/h
進水最高溫度	40 度 C
體積(mm)	332 x 426 x 872 mm
重量(Kg)	15.3 Kg

KÄRCHER

德國凱馳

德商 凱馳清潔設備股份有限公司
KÄRCHER LIMITED TAIWAN

235 新北市中和區員山路502號1F/2F-1
電話：02-2221-0698 傳真：02-2221-1695
807 高雄市三民區敦煌路19巷43號
電話：07-397-0699 傳真：07-397-0199
網址：www.karcher.com.tw
技術服務專線：0800-666-825

K 4 Premium TW 2017.2

Alfred Kärcher GmbH & Co. KG

Alfred-Kärcher-Str. 28 - 40
71364 Winnenden (Germany)
Tel.: +49 7195 14-0
Fax: +49 7195 14-2212



<http://www.kaercher.com/dealersearch>

