

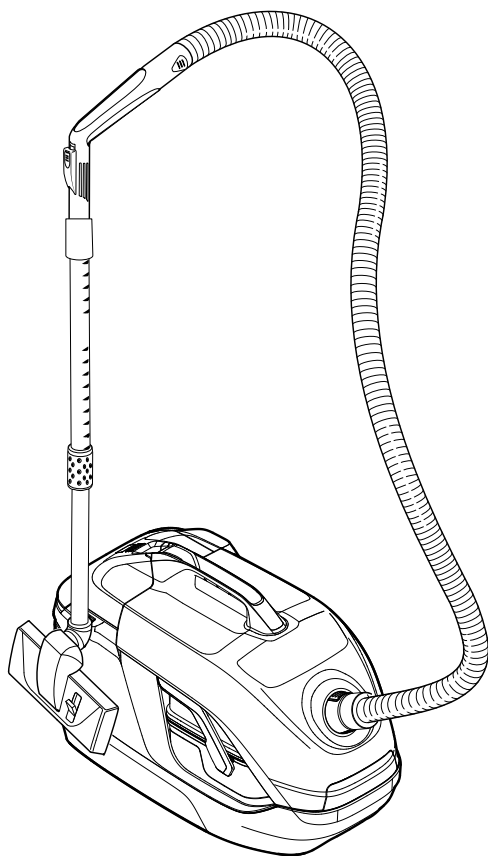
KÄRCHER

makes a difference

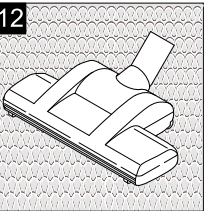
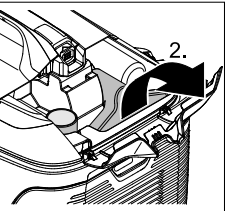
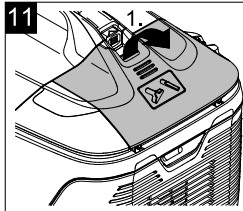
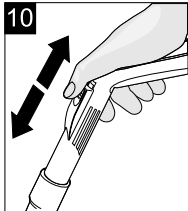
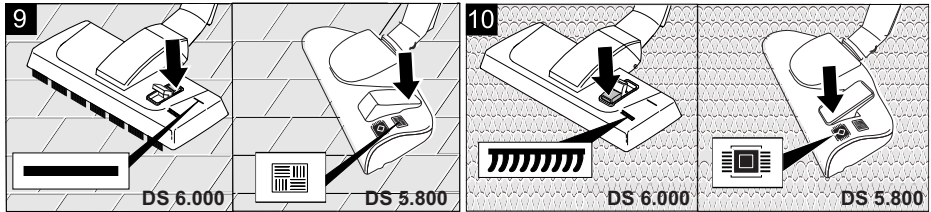
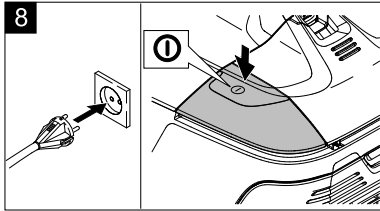
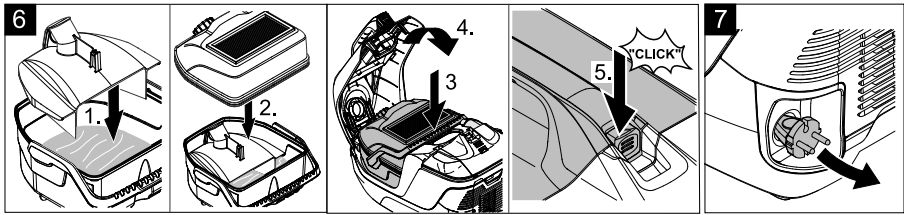
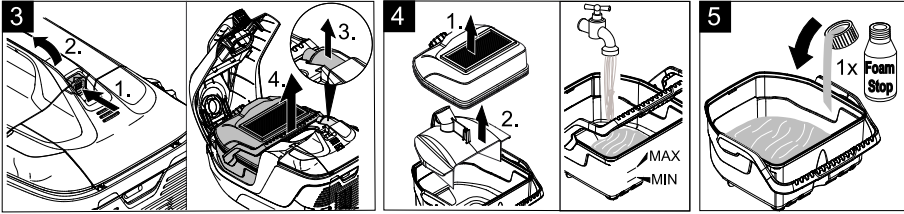
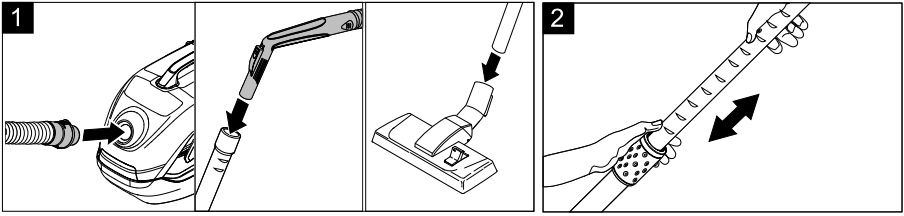
DS 6.000

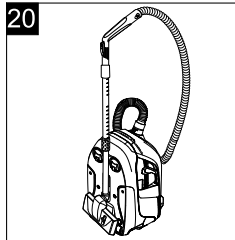
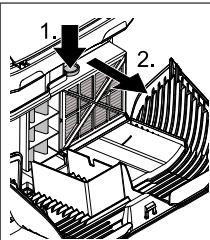
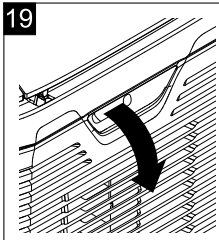
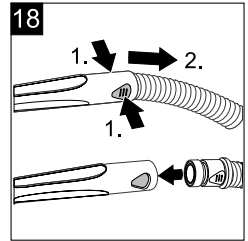
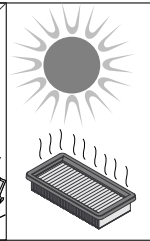
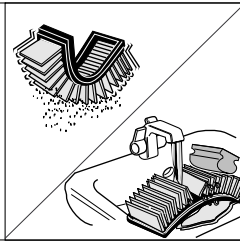
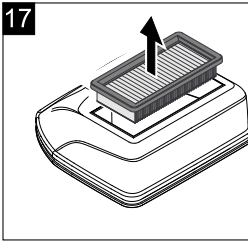
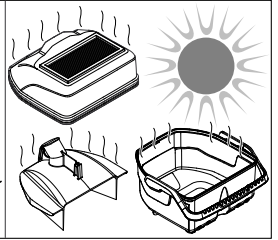
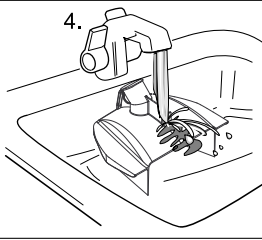
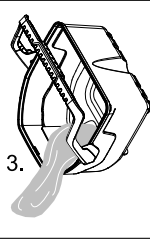
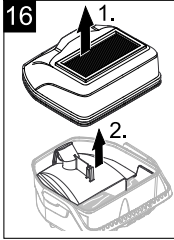
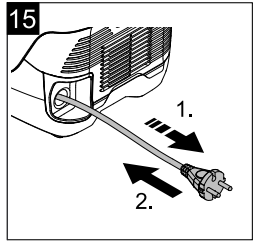
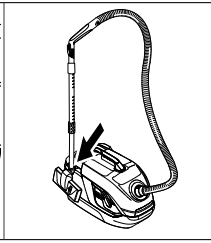
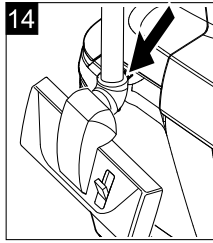
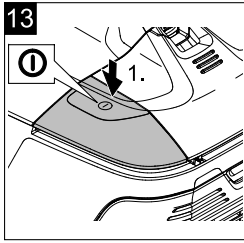
English. 5

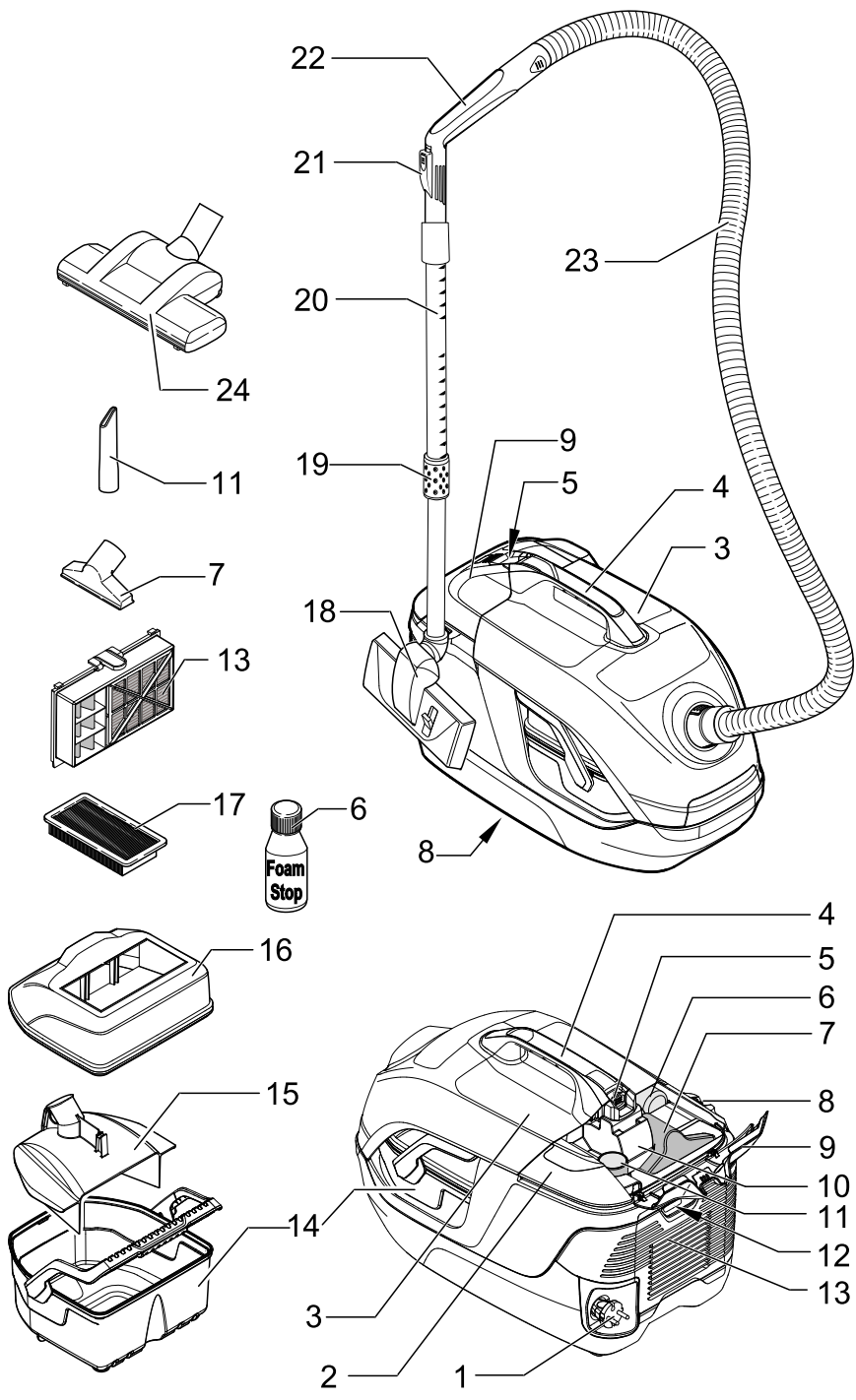
中文. 11



59675930 (01/19)







Contents

General notes	EN	5
Safety instructions	EN	6
Description of the Appliance	EN	7
Commissioning/ Operations	EN	7
Maintenance and Care	EN	9
Technical specifications	EN	9
Troubleshooting	EN	10

General notes



Before using your appliance for the first time, read these original operating instructions, act in compliance with them, and keep them for later use or for subsequent owners.

Proper use

The appliance is intended for use as a dry vacuum cleaner corresponding to the descriptions given in these operating instructions and the safety notes.

As an option, small volumes of liquid can be vacuumed.

- Use this appliance only with a filled water filter container.
- Use this appliance only for personal use; use only the accessories and spare parts approved by KÄRCHER for such use.

Description and effectiveness

The three-step filter system of the water filter vacuum cleaner, which consists of a water filter, an intermediate filter and a HEPA filter, retains 99.99%* / 99.9%** of all particles above 0.3 µm vacuumed up. The outgoing air is fresh and cleaned. As the water in the water filter binds the dirt particles, no dust is raised upon draining the water. Therefore, this appliance is also suitable for individuals suffering from allergies.

* DS 6.000 Waterfilter

** DS 5.800 Waterfilter

Environmental protection



The packaging material can be recycled. Please do not place the packaging into the ordinary refuse for disposal, but arrange for the proper recycling.



Old appliances contain valuable materials that can be recycled. Please arrange for the proper recycling of old appliances. Please dispose your old appliances using appropriate collection systems.

Electrical and electronic devices often contain components which could potentially pose a danger to human health and the environment if handled or disposed of incorrectly. However, these components are necessary for the proper operation of the device. Devices marked with this symbol must not be disposed of with regular household rubbish.

Notes about the ingredients (REACH)

You will find current information about the ingredients at: www.kaercher.com/REACH

Disposing of the filter and contaminated water

The filters are made from environment-friendly materials. They can therefore be disposed off through the normal household garbage provided you have not sucked in substances that are not permitted to be thrown into household garbage.

The wastewater can be discharged via the drain as long as it does not contain illegal substances.

Scope of delivery

The scope of delivery of your appliance is illustrated on the packaging. Check the contents of the appliance for completeness when unpacking.

In the event of missing accessories or any transport damage, please contact your dealer.

Warranty

The terms of the guarantee applicable in each country have been published by our respective national distributors. We will repair possible faults on your unit free of charge within the warranty period, insofar as the faults are caused by material defects or defective workmanship. Guarantee claims should be addressed to your dealer or the nearest authorized customer service centre, and supported by documentary evidence of purchase.

(See address on the reverse)

Customer Service

Our KÄRCHER branch will be pleased to help you further in the case of questions or faults.

(See address on the reverse)

Accessories and Spare Parts

Only use original accessories and spare parts, they ensure the safe and trouble-free operation of the device. For information about accessories and spare parts, please visit www.kaercher.com.

Safety instructions

⚠ DANGER

- *The appliance may only be connected to alternating current. The voltage must correspond with the type plate on the appliance.*
- *Never touch the mains plug and the socket with wet hands.*
- *Do not pull the plug from the socket by pulling on the connecting cable.*
- *Check the power cord with mains plug for damage before every use. To avoid risks, arrange immediately the exchange by an authorized customer service or a skilled electrician, if the power cord is damaged.*
- *To avoid accidents due to electrical faults we recommend the use of sockets with a line-side current-limiting circuit breaker (max. 30 mA nominal tripping current).*
- *Turn off the appliance and remove the mains plug prior to any care and maintenance work.*
- *Repair works may only be performed by the authorised customer service.*

⚠ WARNING

- *This appliance is not intended for use by persons with limited physical, sensory or mental capacities or lacking experience and/or skills, unless such persons are accompa-*

nied and supervised by a person in charge of their safety or they have received precise instructions on the use of this appliance and have understood the resulting risks.

- *Children may only use this appliance if they are over the age of 8 and supervised by a person in charge of their safety, or if they have received instructions on the use of this appliance and have understood the resulting risks.*
- *Children must not play with this appliance.*
- *Supervise children to prevent them from playing with the appliance.*
- *Cleaning and user maintenance must not be performed by children without supervision.*
- *Keep packaging film away from children - risk of suffocation!*
- *Switch the appliance off after every use and prior to every cleaning/maintenance procedure.*
- *Risk of fire. Do not vacuum up any burning or glowing objects.*
- *The appliance may not be used in areas where a risk of explosion is present.*
- *Do not use abrasives, glass or universal cleaners! Never immerse the appliance in water. Certain materials may produce explosive vapours or mixtures when agitated by the suction air!*

Never vacuum up the following materials:

- Explosive or combustible gases, liquids and dust particles (reactive dust particles)
- Reactive metal dust particles (such as aluminium, magnesium, zinc) in combination with highly alkaline or acidic detergents
- Undiluted, strong acids and alkalis
- Organic solvents (such as petrol, paint thinners, acetone, heating oil).

In addition, these substances may cause the appliance materials to corrode.

Hazard levels

⚠ DANGER

Pointer to immediate danger, which leads to severe injuries or death.

⚠ WARNING

Pointer to a possibly dangerous situation, which can lead to severe injuries or death.

⚠ CAUTION

Pointer to a possibly dangerous situation, which can lead to minor injuries.

ATTENTION

Pointer to a possibly dangerous situation, which can lead to property damage.

Description of the Appliance

→ Illustrations on fold-out page 4!



- 1 Power cord with plug
 - 2 ON/OFF switch for appliance
 - 3 Appliance flap
 - 4 Carrying handle
 - 5 Opening button for appliance flap
 - 6 Defoamer liquid (FoamStop)
 - 7 Upholstery nozzle
 - 8 Storage holder for floor nozzle
 - 9 Accessories flap
 - 10 Accessory mount
 - 11 Crevice nozzle
 - 12 Outgoing air flap for HEPA filter
 - 13 HEPA-filter
 - 14 Water filter container
 - 15 Baffle plate
 - 16 Lid of the water filter container
 - 17 Intermediate filter
 - 18 Floor nozzle, reversible
 - 19 Release to adjust the telescoping vacuum pipe
 - 20 Telescopic suction pipe
 - 21 False air slide
 - 22 Handle
 - 23 Suction hose
- Additional scope of supply with appliance 1.195-202.0**
- 24 Turbo floor nozzle

Commissioning/ Operations

Caution! When the water tank is filled, the appliance may only be operated in the horizontal position. Prior to moving the appliance into the upright position, the water tank must be drained. Otherwise the floor can be damaged.

Note

Should the mains fuse trip upon switching on the appliance, it could be due to the fact that other electronic devices are simultaneously connected and operated on the same electric circuit. Refer to chapter "Technical data" for mains fuse.

The appliance will shut down automatically if there is risk of overheating. Turn the appliance off and pull the power plug. Replace the HEPA filter. After the elimination of the disturbance, allow the appliance to cool down for a at least 1 hour; then the appliance is ready for operation again.

Connect accessories

Illustration **1**

- Connect suction hose to the appliance.
- Connect the handle to the telescopic vacuum pipe and attach the floor nozzle.

Illustration **2**

- Activate the release and extend or retract the interior pipe to the desired length.

Note: Adjust the telescoping pipe matching your height so that you will be able to work comfortably while walking upright.

Fill the water filter reservoir

Caution

Do not use the device if the water filter container is empty! When the appliance is delivered, the intermediate filter and the baffle plate are already installed. When filling, make sure that these components are installed properly (see: SCOPE OF DELIVERY). This could be the cause of poor vacuuming performance or untimely failure of the intermediate filter (see: FINISH OPERATION).

Illustration **3**

→ Open the appliance flap and remove the defoamer liquid (FoamStop) as well as the water filter container.

Illustration **4**

→ Remove the lid from the water filter container and take out the baffle plate, then fill the water filter container with tap water until the level settles between the MIN and MAX markings (approx. 2.0 l!)

Illustration **5**

→ Add one cap full of the defoaming liquid (Foam-Stop) to the water filter reservoir.

Note: The functioning of the vacuum cleaner is based on the whirling of the suction air in the water filter. In the process, sucked-in materials and deposits of cleaning agents from floors get collected in the water bath. This can sometimes lead to the formation of foam. It is necessary to add a capful of the defoamer liquid to the water bath to avoid this situation. Slight foam formation is normal and does not hamper the functioning of the machine.

Illustration **6**

→ **Note:** Please refill water as soon as the water level in the reservoir sinks below the MIN mark. Insert the baffle plate and reattach the lid of the water filter container. Install the complete water filter container in the appliance.

Start working

Illustration **7**

→ Pull the power cable out of the appliance completely.

Illustration **8**

→ Insert the appliance plug into the mains socket.

→ To switch on the appliance press the on/off switch.

Caution

Do not vacuum up large amounts of powdery materials such as cocoa, flour, laundry detergent, pudding powder or similar materials!

Working with the floor nozzle

Vacuuming hard surfaces

Illustration **9**

→ Use your foot to press the reversing switch of the floor nozzle. The brush strips at the bottom of the floor nozzle are extended.

Vacuuming carpeted floors

Illustration **10**

→ Use your foot to press the reversing switch of the floor nozzle. The brush strips at the bottom of the floor nozzle are retracted.

Note

Due to the high suction power of the appliance, the suction nozzles can draw themselves too firmly to carpets, upholstery, etc. during work. In this case, use the false air slide to reduce the suction power. Close it again after use.

Working with the crevice nozzle and the upholstery nozzle

Note: The crevice and upholstery nozzles are stored in the appliance.

Illustration **11**

→ Open the accessories flap and take out the desired nozzle for working.

Crevice nozzle

for edges, joints, heaters and hard to reach locations.

Upholstery nozzle

for cleaning upholstered furniture, laced curtains, mattresses, etc.

Turbo floor nozzle

* depending on model

Illustration **12**

→ Turbo floor nozzle

(order no. 4.130-177.0)

brush and vacuum in one work cycle.

Especially suitable in order to pick up animal hair and to vacuum high floor carpets. The drive of the brush roller happens by the air stream.

There is not electrical outlet necessary.

Park position

Illustration **13**

→ Switch off the appliance; press the on/off foot switch to do so.

Illustration **14**

→ Insert the floor nozzle into the pickup on the appliance when taking a break.

Finish operation

Illustration **13**

→ Turn off the appliance and disconnect the mains plug.

Illustration **15**

→ The cable is automatically retracted into the appliance by slightly pulling on the power cord.

Cleaning the water filter system

Caution

Rinse the water filter container, the filter cover and the baffle plate under running water after each use and allow them to dry. Make sure that the guides of the baffle plate are also clean.

Illustration **3**

→ Remove the water filter reservoir from the appliance (see: FILLING THE WATER FILTER RESERVOIR).

Illustration **16**

→ Remove the lid from the reservoir and take out the baffle plate.

→ Empty the water filter container.

→ Rinse the cover, the baffle plate and the water filter container under running water and allow them to dry.

Illustration **17**

→ Clean/rinse the intermediate filter as necessary. (see: CARE, MAINTENANCE)

Caution

All parts of the water filter must be properly dried prior to assembly!

Transport, storage

Caution

Prior to storing the appliance, ensure that no water remains in the water filter container and all parts of the water filter system are properly dried.

→ Hold the appliance at the carrying handle when you want to transport it and store it in dry rooms.

Illustration 20

→ The appliance can be stored in an upright position. On the bottom of the appliance there is an additional parking position for the floor nozzle.

Maintenance and Care

Cleaning/replacing the intermediate filter

Note: Clean the intermediate filter at least every 8 weeks with normal use. If the suction performance is deteriorating, the filter must be cleaned sooner.

Use a commercially available soft household sponge to clean the filter to avoid damaging the coated fins.

Illustration 17

→ The individual fins of the intermediate filter can be cleaned under running water using the sponge.

→ Allow the filter to dry completely.

→ With normal use, replace the intermediate filter at least every 12 months, if necessary, it can be replaced sooner.

Note: The intermediate filter must be disposed of as residual waste.

Cleaning the appliance and accessories

Illustration 13

→ Suction hose and handle can be disassembled for cleaning.

→ Check the accessories for obstructions and clean if necessary. Do not use water to clean the floor nozzle.

Clean the turbo floor nozzle

* depending on model

Cut hair that is entangled in the roller brush along the cutting edge with a pair of scissors, and vacuum them off using the crevice nozzle.

Change HEPA filter

Note: In order to ensure an optimised cleaning performance and function of the appliance, this filter must be changed at least every 12 months. Replace sooner if damaged or extremely dirty.

Caution

Do not rinse out the HEPA filter!

→ Remove the outgoing air flap.

Illustration 19

→ Remove the HEPA filter.

→ Insert a new HEPA filter so that it "CLICKS" into place.

→ Reinstall the lid so it "CLICKS" into place.

Technical specifications

Nominal voltage 1~50-60 Hz	220-240	V
Output P _{nom}	900	W
Fill capacity of the water filter reservoir	2,0	l
Sound	66	dB(A)
Weight (without accessories)	7,5	kg
Nominal width, accessories	35	mm

DS 6.000 Waterfilter

DS 6.000 Waterfilter, Mediclean:

HEPA filter H 13 class according to EN 1822 (effective 1998)

DS 5.800 Waterfilter:

HEPA filter H 12 class according to EN 1822 (effective 1998)

Subject to technical modifications!

Troubleshooting

You can rectify minor faults yourself with the help of the following overview.

If in doubt, please consult the authorized customer service.

Appliance does not vacuum

Power supply is interrupted

- Remove the mains plug, check the connecting cable and the mains plug for damage.

Weak/diminishing suction power

Forgot the baffle plate or not inserted correctly

- Reinsert the baffle plate correctly.
(see: FILLING THE WATER FILTER RESERVOIR)

Intermediate filter missing or not inserted correctly

- Check the intermediate filter.

Intermediate filter is dirty

- Wash the filter, install new intermediate filter if required. (see: CARE, MAINTENANCE)

Intermediate filter is wet

- Let the intermediate filter dry or install new dry filter. (see: CARE, MAINTENANCE)

Strong foam generation in the water filter reservoir

- Replace the water and add 1 to 2 capfuls of Foam-Stop. Check the intermediate filter for moisture. If necessary, clean the damp filter under running water and allow it to dry afterwards or install new filter.

Too little or too much water in the water filter reservoir

- Check the MIN / MAX marks on the reservoir.

HEPA filter is soiled

- Replace the HEPA filter.
(see: CARE, MAINTENANCE)

Accessory is blocked

- Remove the blockage.
(see: CARE, MAINTENANCE)

False air slide at the handle is open

- Close the false air slide.
(see: WORKING WITH THE FLOOR NOZZLE)

Appliance flap does not close

The cover of the water filter is not properly installed

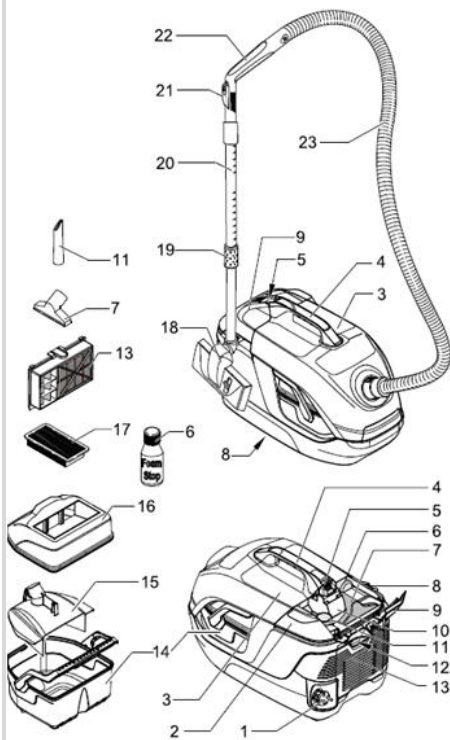
- Properly install the cover of the water filter container.

The water filter is not properly installed

- Remove the water filter and correctly insert it into the appliance.
(see: FILLING THE WATER FILTER RESERVOIR)

家用水過濾式吸塵器 DS6.000 中文說明書

(一) 主機本體與配件名稱



1. 自動收納電源線/插頭
2. 主機開關
3. 主機上蓋
4. 手提把手
5. 主機上蓋開合處
6. 除泡劑(隨機標準配件)
7. 手持吸頭
8. 地板吸頭收納處
9. 配件收納上蓋

10. 配件上蓋開合處
11. 尖嘴吸頭
12. HEPA 過濾裝置蓋
13. HEPA 過濾器
14. 水過濾箱
15. 水過濾箱過濾上蓋
16. 水過濾箱蓋
17. 馬達板式過濾器(可水沖洗)
18. 地板刷頭
19. 金屬延長桿調整開關
20. 金屬延長桿
21. 氣孔控制開關
22. 把手
23. 吸塵管

調整與操作

注意！當水過濾水箱已填充至標準水位後，主機必須要平行擺放進行操作。收納時可以直立擺放。收納前必須將水完全倒除，若無，殘餘水漬或漏水恐造成地板損壞。

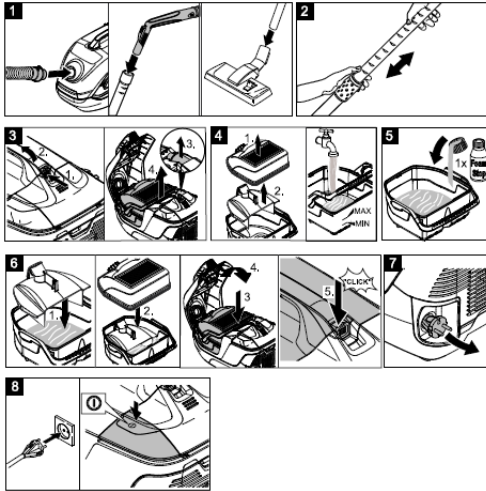
(二) 安全提示

使用本產品前，請遵守下列基本安全事項

- 第一次使用前，請務必詳閱本說明書。
- 請了解主機安裝、操作使用與關閉主機方式。
- 請勿於身體不適時操作主機，以免發生危險。
- 請遵守本說明之配件使用、保養與維修資訊。

- 本電器不預期供生理、感知、心智能力、經驗或知識不足之使用者(包含孩童)使用,除非在對其負有安全責任的人員之監護或指導下安全使用。
- 請遵守本說明之配件使用、保養與維修資訊。
- 孩童應受監護,以確保孩童不嬉玩電器。

(三) 主機安裝連接



配件安裝請參照圖示 1

將吸塵管連接於主機上。將吸塵金屬延伸桿連接並選用各類清潔刷頭安裝。

配件安裝請參照圖示 2

在清潔時,請將金屬延伸桿調整適當的高度便可以輕鬆的工作。

電源線抽取請參照圖示 7

輕將電源線由主機自動捲盤抽出適當的長度即可。

(四) 填充水過濾水箱

注意

水過濾水箱如未填充水前,請勿啟動主機開關進行清潔。

填充水過濾水箱請參照圖示 3

將主機上蓋開啓,提出過濾水箱。

填充水過濾水箱方式請參照圖示 4

將水過濾水箱上蓋開啓,移除水過濾水箱過濾上蓋,將水填充於水箱中直到水箱刻度滿水位與低水位中間即可。

加入除泡劑請參照圖示圖示 5

倒入一瓶蓋的除泡劑至水過濾水箱。注意水濾式吸塵器主要利用水過濾地板粉塵,如吸到一些家用清潔劑可能會讓水箱中的除泡劑變質而失去原本的作用。

填充水過濾水箱方式請參照圖示 6

如果水過濾水箱水源至低點水位時,請添加至指定水量位置。完成水量添加後請將水過濾箱過濾上蓋與水箱蓋上,並放置回主機中,閉合上蓋扣緊。

電源線抽取方式請參照圖示 7

將電源線於主機後端輕輕拉出。

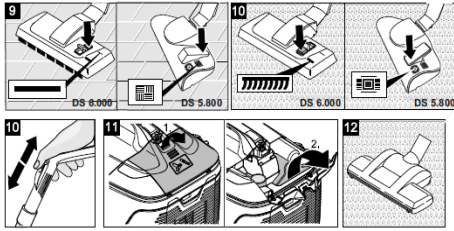
電源線使用請參照圖示 8

將電源線插入建議的電源插座上。開/關主機請使用主機上端的主機開關。

注意

請勿使用本主機應用於在大型的垃圾吸塵或吸水。

(五) 使用地板刷頭



地板刷頭使用請參照圖示 9
利用腳踩踏地板刷頭上的切換鍵
將大型地板刷頭毛刷展開開啓。

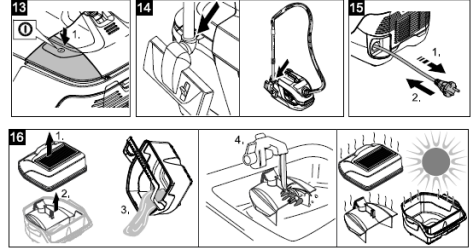
(六) 進行地毯清潔

地板刷頭使用請參照圖示 10
利用腳踩踏切換鍵將大型地板刷頭
毛刷。
注意可以利用吸塵手把上的氣孔控
制開關進行吸塵力調整來對應適當
地毯材質。

(七) 使用尖嘴吸頭與手持吸頭

注意 尖嘴吸頭與手持吸頭皆放置
於主機配件盒中。
刷頭使用請參照圖示 11
將主機配件盒蓋打開選擇適用的清
潔吸頭。
尖嘴吸頭
應用於邊角、清潔物體關節處或很
難去清潔的細縫中。
手持吸頭
應用於裝潢家飾或家具或窗簾等。

(八) 主機中斷使用

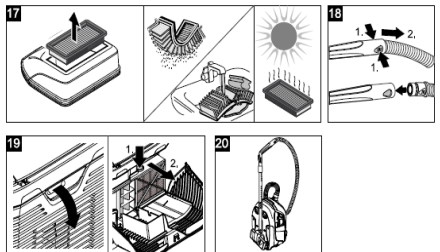


暫時中斷清潔請參照圖示 13
關閉主機電源開關。
收納配件請參照圖示 14
請將配件拆除並收納於配件盒中。

(九) 停止清潔

停止清潔關閉主機請參照圖示 13
關閉主機電源並移除電源線插頭。
電源線回收請參照圖示 15
輕拉電源線，電源線將自動收回，
注意收線太快有可能造成電源線收
納盤損壞或無法收線，請慢速將電
源線回收。

(十) 清潔水過濾水箱



小心：
請使用清水將水箱沖洗乾淨，請
注意將水清除乾淨並乾燥。
水過濾水箱使用請參照圖示 3
請依照上述水箱添加清水與安裝
方式。
水過濾水箱清潔請參照圖示 16
將水箱上蓋移除，並將水過濾箱過

濾上蓋移除。將污水倒除。使用清水將水箱沖洗乾淨，並晾乾。

過濾器清潔請參照圖示 17

必要時請清潔/沖洗馬達板式過濾器。濾網必需完成乾燥才可使用，不然會造成吸力減弱。

注意所有水濾式吸塵器配件都需要適當乾燥。

(十一) 主機移動與收納

危險

電擊危險，請將電源插頭移除。所有水濾式吸塵器配件都需要適當乾燥。

使用主機上端手把將主機移動到室內乾燥地方存放。

主機存放方式請參照圖示 20

主機可直立存放。在主機尾端有地板刷頭專屬的收納處。

(十二) 主機維護

危險

電擊危險，請將電源插頭移除。

更換馬達板式過濾器

注意：

通常正常使用後 8 週必須進行清潔。但如果已經影響到吸塵效率則需要提早進行清潔。

可以利用軟式清潔泡棉進行清潔。

過濾器清潔請參照圖示 17

馬達板式過濾器可以利用軟式清潔泡棉進行清潔或水洗。清潔後必須要让過濾裝置乾燥。

每 12 個月馬達版式過濾必須更換。

圖示 18

→吸塵管請拆卸下後進行清潔。

→檢查主機配件是否有堵塞狀態。不要利用清水直接清洗地板刷頭。

(十三) 清潔 HEPA 過濾器

HEPA 過濾器每 12 個月必須進行更換，但如果損壞或太髒則要盡速更換。

HEPA 過濾器禁止使用清水沖洗清潔。

→移除 HEPA 過濾裝置蓋。

→將新的 HEPA 過濾器安裝並蓋上。

→請確認蓋上時有聽到「喀」音。

(十四) 相關配件

全系列德國凱馳產品皆有專用相關的配件進行更換或維修，請勿任意拆解，此動作很有可能讓主機損壞且無法修復。相關配件購買，請洽德國凱馳原廠展售中心或授權經銷商。

若電源線損壞時，必須由授權維修經銷商或德國凱馳直營維修中心之專業資格工程師加以更換以避免危險。

(十五) 產品保固

1. 主機馬達保固一年，其餘配件及消耗品(主機內其他附件)，皆不在保固範圍內。
2. 使用本機器前，請詳細閱讀中文說明書。
3. 在保固期間內，德國凱馳會提供免費零件及維修服務修復該產品。
4. 未經授權人員所進行的維修與機體拆解，或是未使用德國凱馳原廠零件，都會使保固失效。
6. 如需產品維服務，請將完整的服務保證書或購買證明，以及需維修之產品快遞或親洽授權的德國凱馳維修服務中心。

(十六) 故障排除

您可以簡易判斷故障錯誤並排除，但德國凱馳建議請勿自行拆機，此舉動很有可能造成主機永久損壞並失去保固。如需要主機維修請洽詢德國凱馳授權維修中心或德國凱馳直營維修中心。

主機沒有吸塵動作

檢查電源線與插頭是否有損壞。

水過濾水箱沒有安裝正確

重新安裝水過濾水箱。請參考上述安裝步驟。

馬達板式過濾器沒有安裝正確

檢查馬達板式過濾裝置。

馬達板式過濾器髒污

清水進行清潔，必要時更換。

馬達板式過濾器太濕

讓過濾裝置乾燥或更新。

水過濾水箱泡沫過多

加入一蓋或兩蓋除泡劑並檢查馬達板式過濾器濕潤度。

水箱清水太多或太少

檢查水量。

HEPA 過濾器變硬

請更換新 HEPA 過濾器。

配件內阻塞

移除阻塞物。

空氣控制開關開啓的

請關閉手把上的空氣控制開關。

水過濾水箱蓋未正確安裝

請確認並安裝正確。

水過濾水箱未正確安裝

請依照上述步驟確認並安裝正確。

產品規格表：

電壓	110 V
頻率	60 Hz
額定功率	900 W
水箱容量	1.7 l
重量	7.5 Kg
噪音值	66 dB(A)

本產品已經過經濟部標準局檢驗核准

BSMI 通過國家標準檢驗局認證

RoHS 本產品符合有害物質限用標示

請參考下列網址

www.kaercher.com/tw/rohs.html



R3A068
RoHS

KÄRCHER

德國凱馳

德商 凱馳清潔設備股份有限公司

KÄRCHER LIMITED TAIWAN

235 新北市中和區員山路502號1F/2F-1

TEL: 02-2221-0698 FAX: 02-2221-1695

407 台中市西屯區甘肅路2段30號

TEL: 04-2317-6060 FAX: 04-2317-2050

807 高雄市三民區敦煌路19巷43號

TEL: 07-397-0699 FAX: 07-397-0199

網址 WWW.KARCHER.COM.TW

免費服務專線 0800-666-825

DS 6.000 TW Ver.2



www.kaercher.com/dealersearch

Alfred Kärcher SE & Co. KG
Alfred-Kärcher-Str. 28-40
71364 Winnenden (Germany)
Tel.: +49 7195 14-0
Fax: +49 7195 14-2212

