

WH-0608
WH-0707

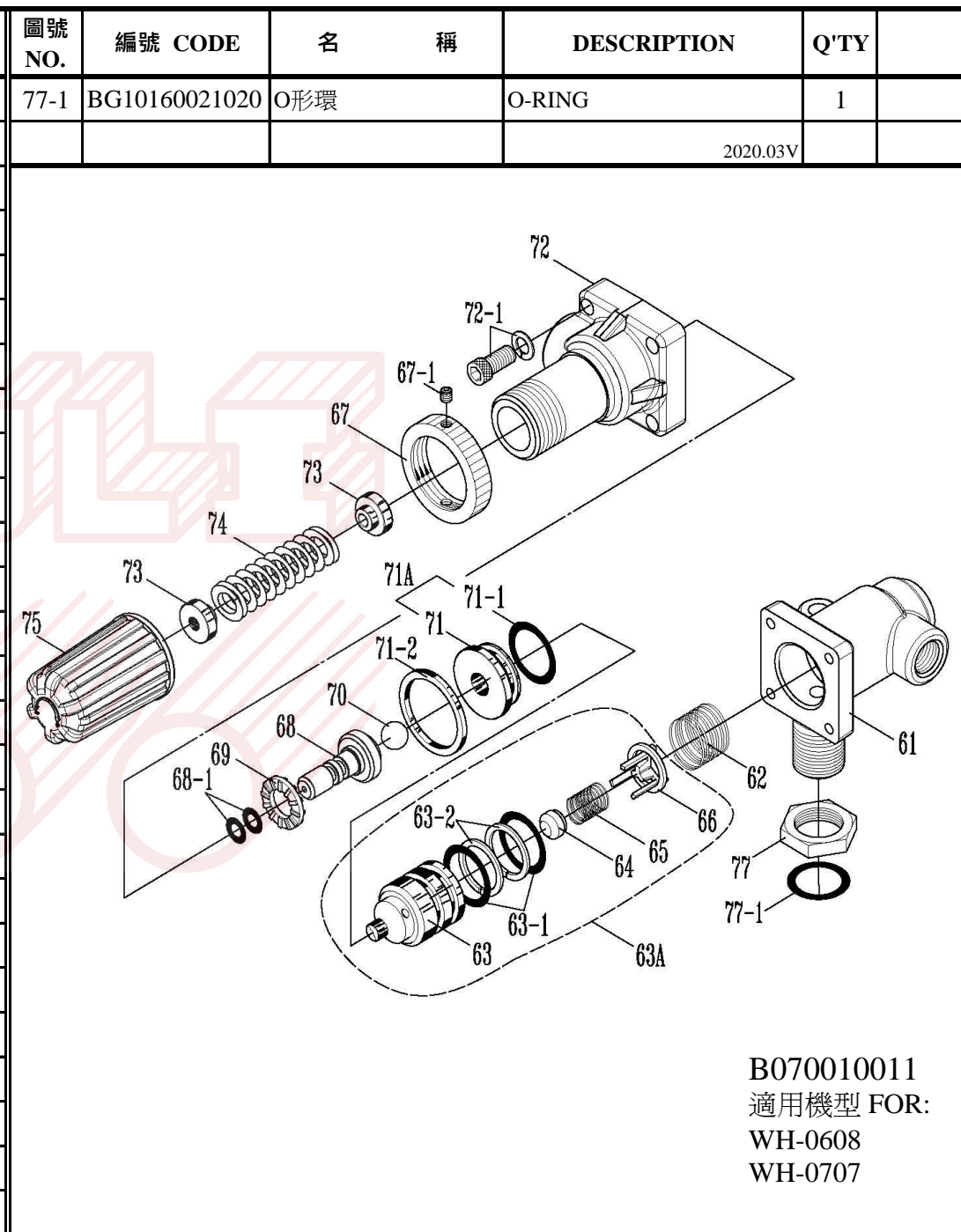
零件表PARTS LIST WH-0608 / WH-0707

圖號 NO.	編號 CODE	名稱	DESCRIPTION	Q'TY	圖號 NO.	編號 CODE	名稱	DESCRIPTION	Q'TY
01	BA20401016160	馬達 60HZ/110V	MOTOR (WH-0608)	1	03-1	1019508000	引擎培林	BEARING	3
	BA20401016210	馬達 60HZ/220V	MOTOR (WH-0608)		03-2	B019503000	柱塞油封	PISTON OIL SEAL	3
	BA21401016110	馬達 50HZ/230V	MOTOR (WH-0707)		03-3	BG10995103510	O形環	O-RING	1
01A	N/A	馬達螺絲	MOTOR SCREW	3	03-4	BS32108300	彈簧華司	SPRING WASHER	4
01-1	N/A	電器盒	COVER	1	03-5	B019509000	軸箱固定螺絲	SCREW	2
01-2	N/A	電器盒上蓋	COVER	1	03-6	B019509020	軸箱固定螺帽	NUT	2
01-3	N/A	啓動電容器	CONDENSOR (START)	1	03-7	BS16108025500	內六角螺絲	HEX SCREW	2
01-4	N/A	運轉電容器	CONDENSOR (RUN)	1	04A	B019304023	柱塞組	PISTON W/ SHOE	3
01-5	N/A	過電流斷路器	CIRCUIT BREAKER	1	04	B019304020	陶瓷柱塞	CERAMIC PISTON	3
01-6	N/A	防水套	CAP	1	04-1	B019308025	柱塞滑靴	PISTON SHOE	3
01-7	B130563021	電源開關	POWER SWITCH	1	05	B019505000	止逆彈簧固定座	SPRING SEAT	3
01-8	B110565000	電源線固定夾	WIRE BINDER	1	06	BJ00106050	柱塞彈簧	SPRING	3
01-9	N/A	連接線	CONNECTION	1	07A	B011801001	排油螺絲組	DRAINAGE SCREW ASSY	1
01-10	N/A	電器盒固定螺絲	SCREW	1	07	B011801000	排油螺絲	DRAINAGE SCREW	1
01-11	N/A	電器盒固定螺絲	SCREW	1	07-1	BG10110015	O形環	O-RING	1
01-12	B019316000	出線皮	PACKING	1	08A	B019229003	油鏡組	OIL WINDOW ASSY	1
01-13	B100563010	腳墊	CUSHION	4	08	B019229020	油鏡	OIL WINDOW	1
02	B019312020	偏心盤	WOBBLE PLATE	1	08-1	BG10158020600	O形環	O-RING	1
02-1	B019313000	軸承油封	BEARING OIL SEAL	1	09A	B011901014	加油蓋組	OIL INLET COVER ASSY	1
02-2	B019118010	推力墊圈	GASKET	2	10	B019504000	防水油封套	WATERPROOF OIL SEAL	3
02-3	B019114010	平面軸承	BEARING	2	10-1	BG10300034	O形環	O-RING	3
02-4	B019305000	培林支撐套	BEARING SPACER	1	11	B019506000	防水迫緊	WATERPROOF PACKING	3
02-5	B019105021	平面軸承片	BEARING	1	11-1	B019507000	防水迫緊墊片	WATERPROOF PACKING GASKET	3
02-6	BS17108010500	無頭內六角螺絲	SCREW	1	12	B019504020	U迫緊套	U-PACKING COLLAR	3
03A	B019501001	曲軸箱組	CRANKCASE ASSY	1	12-1	BG10290033	O形環	O-RING	3
03	1019501001	曲軸箱	CRANKCASE	1	13	B019310003	墊圈	GASKET	3

零件表PARTS LIST WH-0608 / WH-0707

圖號 NO.	編號 CODE	名稱	DESCRIPTION	Q'TY	圖號 NO.	編號 CODE	名稱	DESCRIPTION	Q'TY
14	B019309001	U迫緊	U-PACKING	3	28-3	BS11108016200	六角螺絲	SET BOLT	3
15A	B040063063	進出水活門組	VALVE ASSY	3	*60A	B070010011	自動洩壓總成	UNLOADING VALVE ASSY	1
15	B040263130	進出水活門座	VALVE SEAT	3	78	B100563110	腳墊	CUSHION	1
15-1	BG10210025040	O形環	O-RING	3	78-1	BS21112101	六角螺帽	NUT	1
15-2	B040163062	進水活門塞	INLET VALVE PLUG	3	ACC.	B150901110	過濾網	FILTER	1
15-3	BJ26301030	進水活門彈簧	INLET VALVE SPRING	3	ACC.	B019224010	過濾網申目	FILTER SOCKET	1
15-4	B040363051	進水活門帽	INLET VALVE CAGE	3	ACC.	B150201001	吸水管組 1/2"*9尺	SUCTION HOSE ASSY	1
15-5	BG10170021040	O形環	O-RING	3	ACC.	BD10301000	水管 8.5mm*10M	HOSE 8.5MM*10M	1
15-6	B040163022	出水活門塞	OUTLET VALVE PLUG	3	ACC.	A030102005	噴槍 (WH-0608)	SPRAY GUN (WH-0608)	1
15-7	BJ26301021	出水活門彈簧	OUTLET VALVE SPRING	3	ACC.	A030102006	噴槍 (WH-0707)	SPRAY GUN (WH-0707)	1
15-8	B040363060	出水活門帽	OUTLET VALVE CAGE	3					
16	B019502010	汽缸	CYLINDER	1					
16-1	BS16112045500	內六角螺絲	HEX SCREW	3					
16-2	BS16108045501	內六角螺絲	HEX SCREW	2					
17	B019510000	止水塞頭	PLUG	1					
18	B019518000	進水接頭	INLET CONNECTOR	1					
19	BS50008000	內六角塞頭 PT1/4	PLUG PT1/4	1					
20	B031163041	壓力錶	PRESSURE GAUGE	1					
21	B029433010	高壓軟管90度接頭	90° FLEXIBLE HOSE CONNECTOR	2					
22	B150363002	鋼絲高壓軟管	FLEXIBLE HOSE	1					
23	B310116010	接頭	COUPLING	1					
27	B090563000	電源線(雙扁插頭)	POWER CORD (2-FLAT-PIN PLUG)	1					
28A	N/A	把手組	HANDLE ASSY	1					
28	B019110000	把手片	HANDLE PLATE	1					
28-1	D011003001	握把	RUBBER HANDLE SLEEVE	1	*60A 零件表及展開圖請參閱第4頁。			*60A parts list & diagram please refer to page 4.	
28-2	B019520000	把手桿	HANDLE	1				2020.01V	

圖號 NO.	編號 CODE	名稱	DESCRIPTION	Q'TY
61	B070110050	洩壓汽缸套	UNLOADING VALVE CYLINDER	1
62	BJ50901000	洩壓輔助彈簧	AUXILIARY SPRING	1
63A	B070610001	柱塞活門組	PISTON VALVE ASSY	1
63	B070610000	柱塞活門體	PISTON VALVE BODY	1
63-1	BG10150020020	O形環	O-RING	2
63-2	BG30162020	背托環	BACK-UP RING	2
64	B070709000	止水閥塞	VALVE PLUG	1
65	BJ30901000	球閥固定彈簧	SPRING	1
66	B070809000	球閥固定套	BALL VALVE SEAT	1
67	B071167050	調壓弁固定螺帽	SET BOLT	1
67-1	BS17106005300	無頭內六角螺絲	SCREW	2
68	B070510000	壓力閥桿	VALVE ROD	1
68-1	BG10050009030	O形環	O-RING	2
69	B051901000	消音片	DAMPER PLATE	1
70	B070310020	陶瓷球閥	CERAMIC BALL VALVE	1
71A	B070410001	壓力閥座組	VALVE SEAT ASSY	1
71	B070410000	壓力閥座	VALVE SEAT	1
71-1	BG10170022020	O形環	O-RING	1
71-2	BG20250030	方形環	SQUARE RING	1
72	B070210050	迴水座	OVERFLOW CHAMBER	1
72-1	BS16106019500	內六角螺絲	HEX SCREW	4
	BS32106200	彈簧華司	SPRING WASHER	4
73	B071310000	彈簧上座	SPRING SEAT (UPPER)	2
74	BJ40101010	調壓彈簧	PRESSURE REGULATING SPRING	1
75	B071710110	調壓螺帽	PRESSURE REGULATING KNOB	1
77	B053301010	固定螺帽	SET NUT	1



B070010011
適用機型 FOR:
WH-0608
WH-0707